

# TNER Series Theatrical Chain Hoists

## Unique Features

### Standards

Hoist exceeds stringent world standards; complies with German regulation **BGV-D8**. Standard configuration meets CE Declaration.



### Pull-Rotor Motor Brake

World's most reliable theatrical hoist brake. Simple design. No brake coil to fail or brake disc to replace. **5 year hoist brake warranty.**



### Unique Chain Guide

Provides quiet and smooth guiding of chain into hoist and chain container. Durable, heavy cast iron construction.



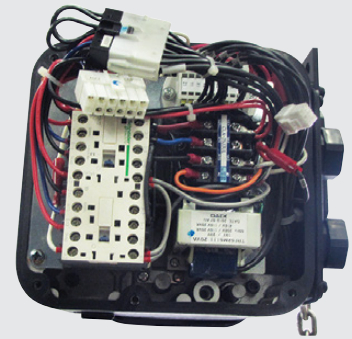
### Sleek Rounded Body

Rugged aluminum housing; no sharp edges and flexible, soft-grip handles.



### Plug and Play Voltage Changer

Quickly change between 208/230V and 460V. Saves valuable time during setup and integration.



### Low Profile Upper/Lower Limit Switches

No adjustment required. Protects hoist and provides maximum travel.



### Size and Speed

Designed to fit standard road cases. ½ and 1 Ton—16 fpm; 2 Ton—8 fpm.



### Grease-Packed Gearbox

For demanding theatrical applications. Maintenance free.



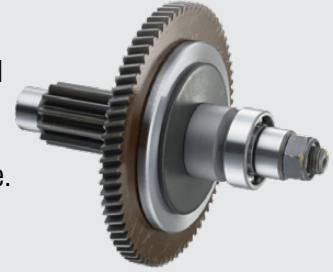
### Nickel-Plated Load Chain

Meets DIN and EN 818-7 standards. Optional black chain available.



### Friction Clutch

Carbon friction material provides consistent performance over a wide temperature range.



### Chain Container

Reversible black canvas chain container needed to meet BGV-D8 regulations. Also designed with two secure attachment points.



### Optional Pendant Control (Pickle)

Red button emergency stop. NEMA 4X, UL/cUL (CSA) listed.



## TNER Series Theatrical Chain Hoists

### Swivel Top and Bottom Hooks

Both hooks swivel 360 degrees. Ball bearings produce smooth rotation. Heavy duty hook latches standard.

### Corrosion Resistant Load Chain

Nickel-plated, DIN chain for superb durability, strength and corrosion resistance.

### Flexible Handles

Equipped with two convenient handles for comfortable and easy handling.

### Heavy Duty Motor

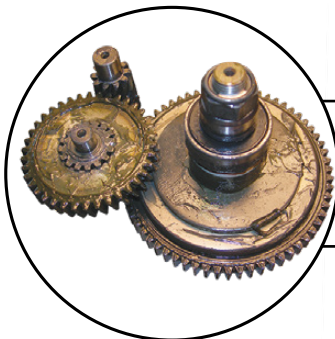
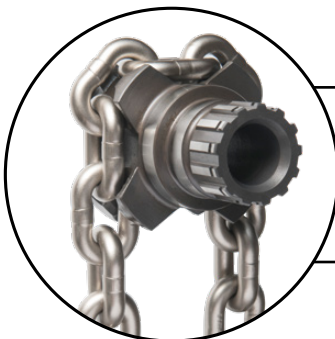
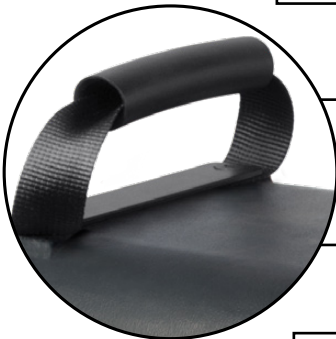
Increased performance and standard thermal motor protection.

### Quiet Load Sheave

Deep groove pockets fully support the load chain during operation. Reduces vibration and chain wear and provides a true vertical lift.

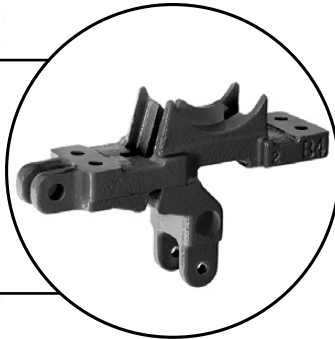
### Heat Treated Helical and Spur Gears

Precision machined for long life. Grease lubrication results in quiet and smooth operation. No oil change required.



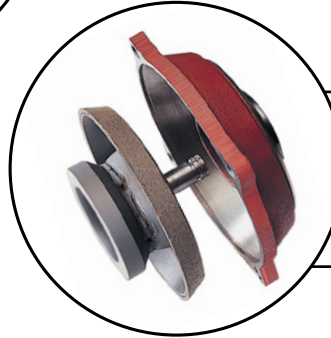
**Unique Chain Guide**

Provides quiet and smooth guiding of chain. Easily replaced without disassembly of the hoist. Heavy cast iron construction for improved wear versus stamped steel design offered by many manufacturers.



**Completely Sealed Body**

Suitable for both indoor and outdoor applications, including harsh environments. (Consult Owner's Manual for details.) Gaskets throughout the hoist provide IP55 rating.



**Pull-Rotor Motor Brake**

Extremely durable and reliable, this advanced design contains no brake coil to fail like conventional disc brakes.

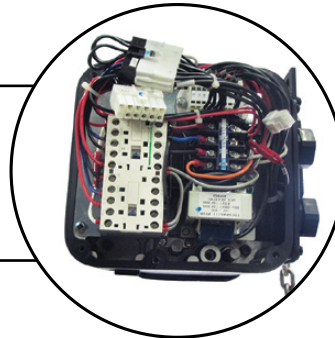
**Long Life Friction Clutch**

Protects hoist from damage and prevents overwinding.



**Quick Voltage Changer**

Change voltage on-the-fly from 208/230V to 460V-3-60. Minimizes prep time from venue to venue. Simple as plug and play.



**Optional Push Button Pendant (Pickle)**

Easy to use, one-handed operation. Rated NEMA 4X, UL/cUL (CSA) listed. Standard control voltage is 110V. Strain relief wire is molded to pendant cord for added support and dependability. Emergency stop on all pendants.



## TNER Series Theatrical Chain Hoists



TNER010L

Our TNER Series theatrical chain hoists were designed using the latest technology for handling stage and theatrical equipment. These high quality, low-headroom, full-featured hoists provide reliable performance for use in theaters, concert halls, arenas and studios.

### Features

#### Standards

Hoist exceeds stringent world standards; complies with German regulation BGV-D8. Standard configuration meets CE Declaration.

#### Pull-Rotor Motor Brake

World's most reliable theatrical hoist brake. Simple design. No brake coil to fail or brake disc to replace. **5 year hoist brake warranty.**

#### Unique Chain Guide

Provides quiet and smooth guiding of chain into hoist and chain container. Durable, heavy cast iron construction.

#### Sleek Rounded Body

Rugged aluminum housing; no sharp edges and flexible soft-grip handles.

#### Plug and Play Voltage Changer

Quickly change between 208/230V and 460V. Saves valuable time during setup and integration.

#### Low Profile Upper/Lower Limit Switches

No adjustment required. Protects hoist and provides maximum travel.

#### Size and Speed

Designed to fit standard road cases. ½ and 1 Ton—16 fpm; 2 Ton—8 fpm.

#### Grease-Packed Gearbox

For demanding theatrical applications. Maintenance free. No oil changes required.

#### Nickel-Plated Load Chain

Meets DIN and EN 818-7 standards. Optional black chain available.

#### Friction Clutch

Carbon friction material provides consistent performance over a wide temperature range.

#### Chain Container

Reversible black canvas chain container needed to meet **BGV-D8** regulations. Also designed with two secure attachment points.

#### Optional Pendant Control (Pickle)

Red button emergency stop. Nema 4X, UL/cUL (CSA) listed.

### Standard Hoist Specifications

#### Capacity Range

1/2 Ton – 2 Ton

#### Reconnectable Voltage

208-230/460-3-60

#### Control Voltage

110V

#### Duty Cycle\*

30 Minutes

#### Classification\*

ASME H3  
JS/ISO M3  
FEM 1Bm

#### Ratings

Hoist — IP55  
Optional Pendant — NEMA 4X,  
UL/cUL (CSA) listed

#### Chain Container

Standard  
Canvas

#### Standard Lift

60' (other lengths available)

#### Standard Pendant and Power Supply Cord

2.5' (longer lengths available)

#### Optional\*\*

Pendant (Pickle)  
Pendant Cord  
Power Supply Cord  
Hubbell, 7-Pin or 14-Pin Connectors  
Road Case  
Black Load Chain  
Bullard® and Shur-Loc® Hooks

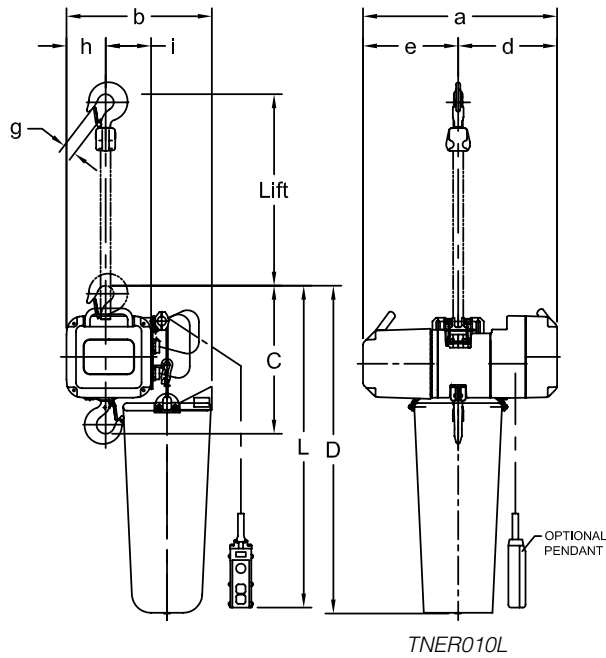
\*See page 12 for additional information.

\*\*See page 10 for additional information.

# HARRINGTON TNER SERIES THEATRICAL CHAIN HOISTS



TNER010L



TNER010L

## SINGLE SPEED—SPECIFICATIONS

Capacity (Tons)	Product Code	Standard Lift (ft)	Standard Push Button Cord L* (ft)	Lifting Speed (ft/min)	Lifting Motor 3 Phase 60 Hz			Load Chain Diameter (mm) x Chain Fall Lines	Net Weight for 10' Lift (lbs)	Net Weight for 60' Lift (lbs)	Weight for Additional One Foot of Lift (lbs)
					Output (Hp)	Rated Current (amps)					
						@208 - 230V	@460V				
1/2	TNER005L	10 or 60	2.5	16	0.65	3.7	1.9	6.3 x 1	77	104	0.57
1	TNER010L				1.3	5.6	2.8	8.0 x 1	99	146	
1	TNER010S			32	2.4	10.4	5.2		108	155	0.93
2	TNER020L			8	1.3	5.6	2.8		8.0 x 2	126	
2	TNER020S			16	2.4	10.4	5.2	135		225	1.9

\*Pendant (pickle) is optional.

## SINGLE SPEED—DIMENSIONS

Capacity (Tons)	Product Code	Headroom C (in)	a (in)	b (in)	d (in)	e (in)	g (in)	h (in)	i (in)	D (in)
1/2	TNER005L	13.2	18.7	14.2	9.6	9.2	0.9	3.9	4.0	35.4
1	TNER010L	16.1	20.0	15.0	10.2	9.8	1.2	4.1	4.7	37.0
1	TNER010S	16.1			8.8	11.2				
2	TNER020L	22.8			10.2	9.8	1.5			48.8
2	TNER020S	22.8			8.8	11.2				